



118 Booralie Road Duffys Forest NSW

6 5 8

A finely finished home, conveniently located near the world-class Terrey Hills Golf and Country Club, bush walking trails and Pittwater waterways.

Approximately a 35 minute drive to the CBD and approximately 10 minutes to the Northern Beaches.

- 5 acres of stunningly landscaped grasslands offering abundant facility
- Double Olympic size floodlit arena (40 x 60), floodlit championship-size tennis court, gymnasium and 17m swimming pool
- Multiple entertaining terraces providing seamless indoor-outdoor flow
- Private two-bedroom guest accommodation with

Type : House
Land Size : 5 Acres
View : <https://www.ciresydney.com.au/sale/nsw/northern-beaches/duffys-forest/residential/house/8055216>

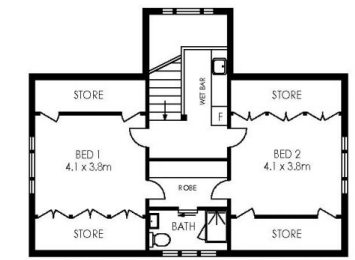


Darren Curtis
02 9328 1422

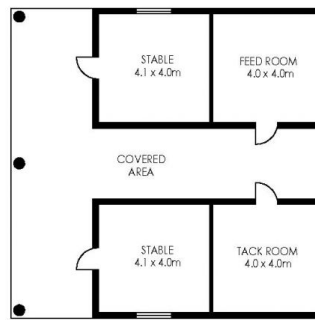


Amy Zhang
02 9328 1422

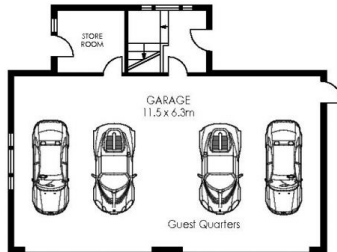
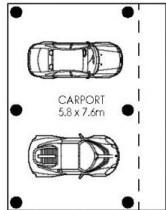
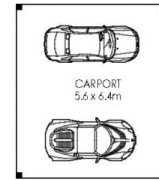
[For full version visit the website](https://www.ciresydney.com.au)



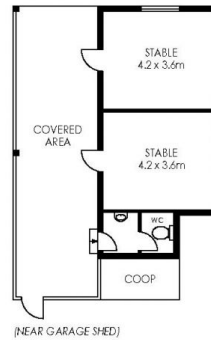
GUEST QUARTERS - GARAGE - UPPER LEVEL



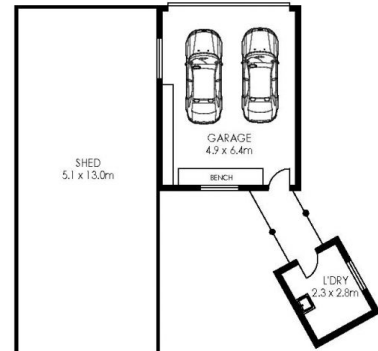
STABLES
(NEAR CABIN)



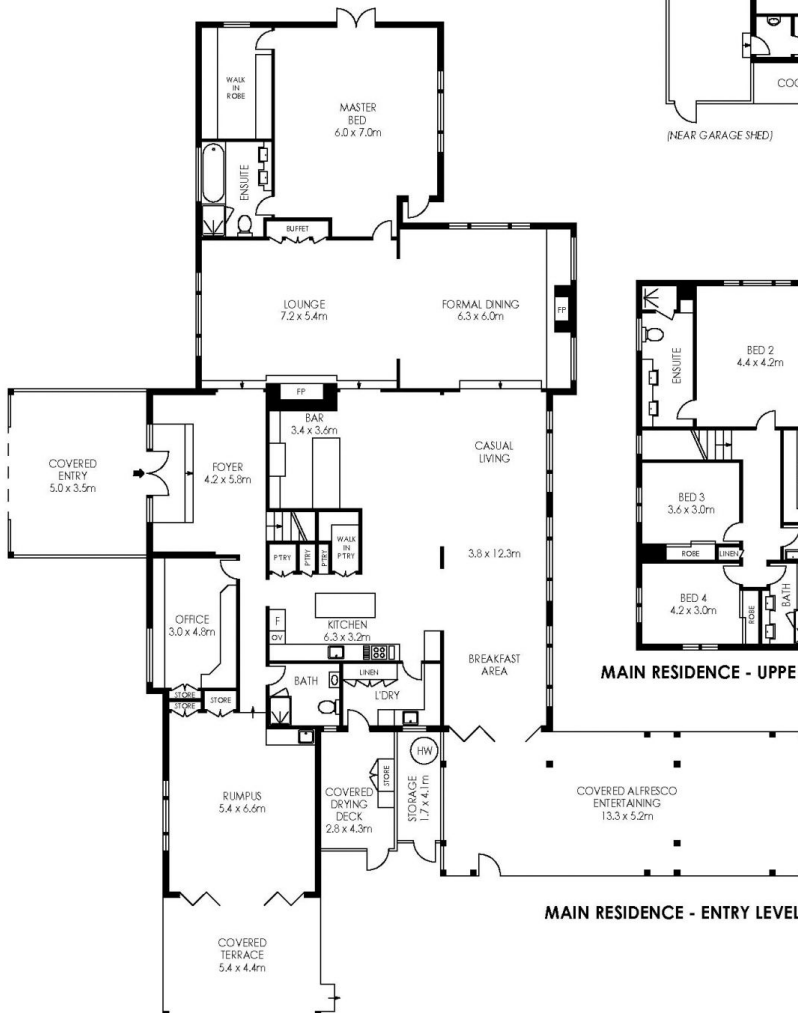
GUEST QUARTERS - GARAGE - ENTRY LEVEL



(NEAR GARAGE SHED)

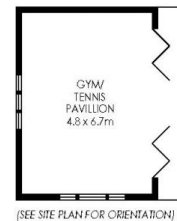


SHED/GARAGE
(NEAR EURABBA ROAD ENTRY)



MAIN RESIDENCE - UPPER LEVEL

MAIN RESIDENCE - ENTRY LEVEL



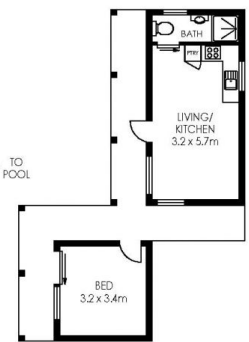
(SEE SITE PLAN FOR ORIENTATION)



(SEE SITE PLAN FOR ORIENTATION)



(SEE SITE PLAN FOR ORIENTATION)



CABIN
(SEE SITE PLAN FOR ORIENTATION)



PLANS SHOWN ONLY INDICATIVE OF LAYOUT. DIMENSIONS ARE APPROXIMATE.

MAIN RESIDENCE

APPROX. INTERNAL AREA = 440 m²
APPROX. EXTERNAL AREA = 144 m²
TOTAL = 584 m²

GUEST QUARTERS

APPROX. INTERNAL AREA = 163 m²
LAND SIZE = 5.27 acres

118 Booralie Road, Duffy Forest



SITE PLAN



PLANS SHOWN ONLY INDICATIVE OF LAYOUT. DIMENSIONS ARE APPROXIMATE.

MAIN RESIDENCE

APPROX. INTERNAL AREA = 440 m²
 APPROX. EXTERNAL AREA = 144 m²
 TOTAL = 584 m²

GUEST QUATERS

APPROX. INTERNAL AREA = 163 m²
 LAND SIZE = 5.27 acres

118 Booralie Road, Duffy Forest