



21 Middle Harbour Road Lindfield NSW

5 🚗 4 🚗 2 🚗

- Situated on the highly desirable Middle Harbour Road, Lindfield this luxurious double-brick residence delivers an irresistible family haven in a prime location.

- The home presides over a stunning and level land-holding of approx. 1,290sqm with exquisite formal gardens, a private park-like lawn and heated salt-water pool.

- Grandly proportioned with bespoke cabinetry and custom window coverings, the dual level floor plan is flexible with a 5th bed/guest ideal for teenagers, extended family or in-laws.

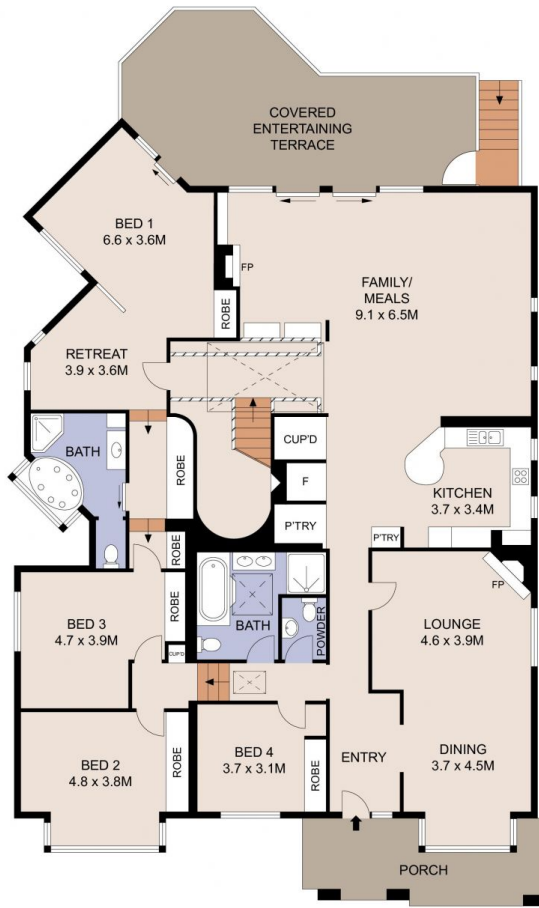
- High ceilings, timber floors and multi-zoned ducted air conditioning, elegant formal lounge and dining with

Type : House
Land Size : 1290 sqm
View : <https://www.ciresydney.com.au/sale/nsw/north-shore-upper/lindfield/residential/house/8055218>

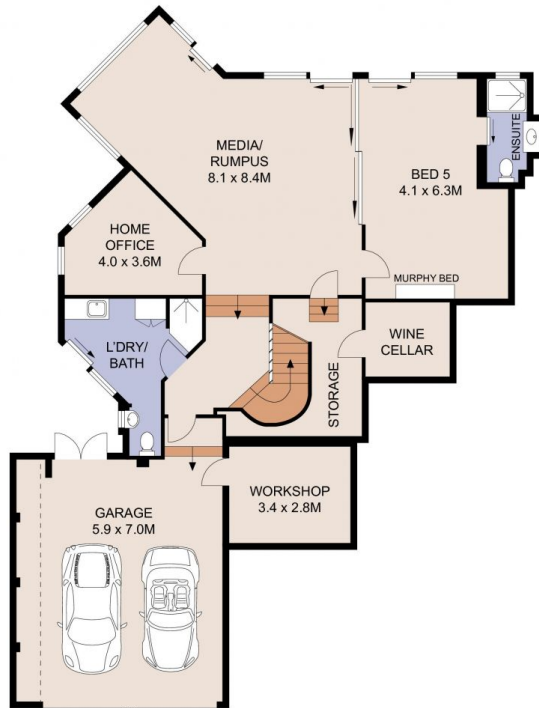


Darren Curtis
02 9328 1422

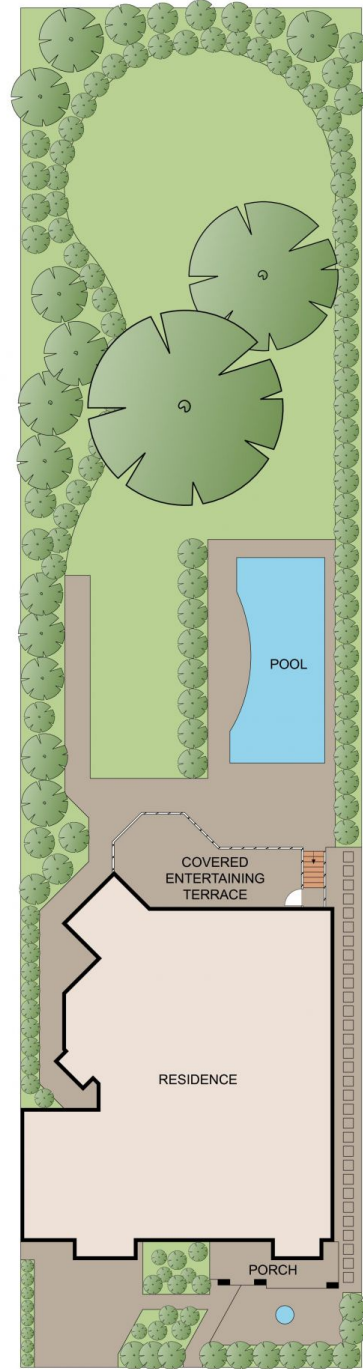
[For full version visit the website](https://www.ciresydney.com.au)



GROUND FLOOR



LOWER GROUND FLOOR



SITE PLAN
(NOT TO SCALE)



TOTAL INTERNAL: 435 m²
TOTAL LAND SIZE: 1290 m²



Plans shown are for presentation purposes only and are not part of any legal document or title. They are subject to errors, omissions, inaccuracies and should not be used as a sole and accurate reference. Interested parties should make their own inquiries using independent sources.

21 MIDDLE HARBOUR ROAD

LINDFIELD