



123 George Street Avalon NSW

6 6 4

- Opening to capture sensational uninterrupted views that stretch across magnificent Pittwater.
- Crafted with entertaining in mind and bathed in the natural light of a coveted due northern aspect.
- Beautifully presented with strong organic materials and a refreshingly simple colour palette.
- One large 1,031sqm title with two separate self-contained dwellings that can be divided into three apartments.
- A carefree coastal lifestyle sheltered from southern storms literally metres to Careel Bay Marina.

Type : House
Price : Expressions of Interest
View : <https://www.ciresydney.com.au/sale/nsw/northern-beaches/avalon/residential/house/8055224>

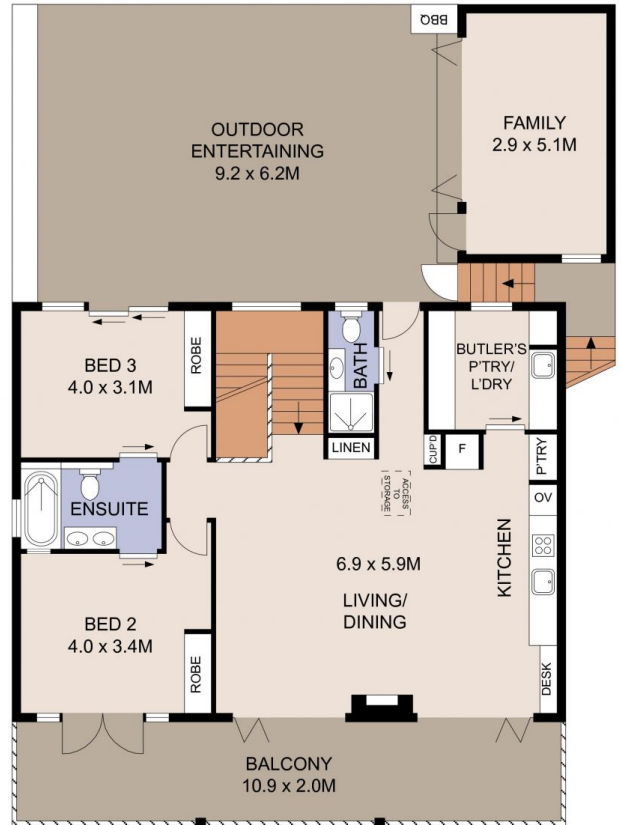


Shane Clinton
02 9328 1422

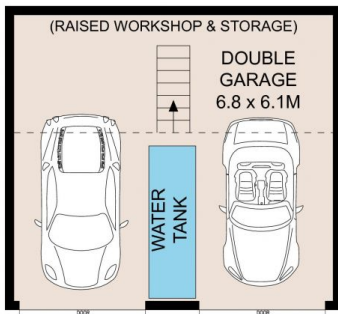
[For full version visit the website](https://www.ciresydney.com.au)



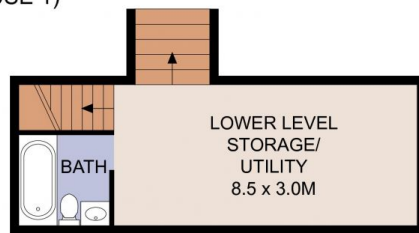
FIRST FLOOR
(HOUSE 1)



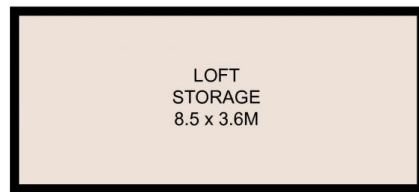
SECOND FLOOR
(HOUSE 1)



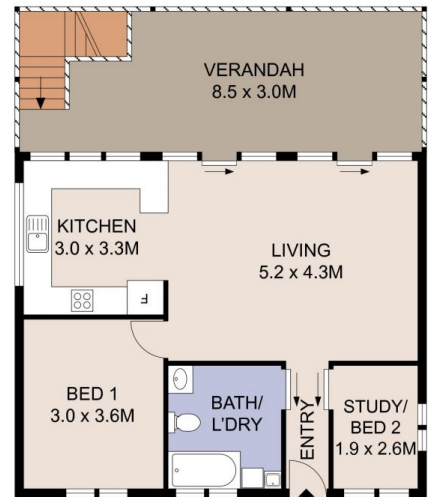
GROUND FLOOR
(HOUSE 1)



LOWER FLOOR
(HOUSE 2)



(HOUSE 2)



GROUND FLOOR
(HOUSE 2)



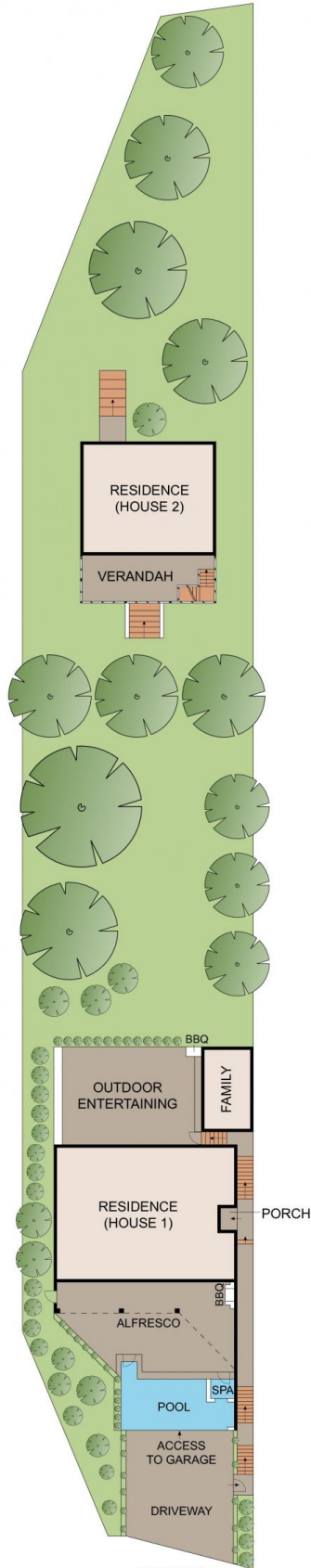
TOTAL INTERNAL (HOUSE 1): 247 m²
 TOTAL INTERNAL (HOUSE 2): 115 m²
 TOTAL INTERNAL: 362 m²



Plans shown are for presentation purposes only and are not part of any legal document or title. They are subject to errors, omissions, inaccuracies and should not be used as a sole and accurate reference. Interested parties should make their own inquiries using independent sources.

123 GEORGE STREET

AVALON BEACH



SITE PLAN
(NOT TO SCALE)

TOTAL LAND SIZE: 1310 m²



Plans shown are for presentation purposes only and are not part of any legal document or title. They are subject to errors, omissions, inaccuracies and should not be used as a sole and accurate reference. Interested parties should make their own inquiries using independent sources.

123 GEORGE STREET

AVALON BEACH