



## Elvina Bay

3 2

For more information email [ken@kenjacobs.com.au](mailto:ken@kenjacobs.com.au) for a comprehensive eBrochure

Remarkably generous 3,163m<sup>2</sup> near-level absolute waterfront landholding on the neck of a peninsula between Elvina and Lovett bays.

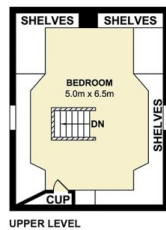
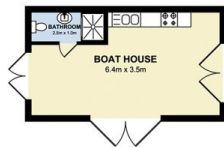
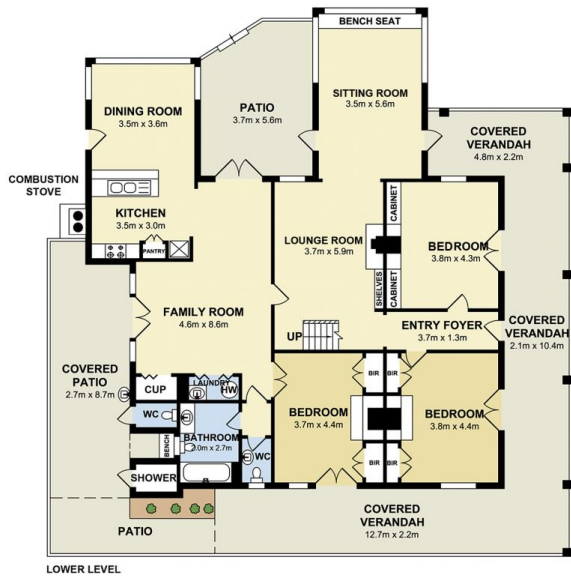
Privately nestled in Ku-ring-gai Chase National Park on the western shores of Pittwater, bathed in all-day sun.

The area's earliest homestead - a gracious 1862 residence with glorious views from two aspects.

Oversized boatshed transformed into a self-contained waterside caretaker's quarters.

[For full version visit the website](https://www.ciresydney.com.au/sale/nsw/north-shore-upper/elvina-bay/residential/house/8055365)

**Type** : House  
**Land Size** : 3163 sqm  
**View** : <https://www.ciresydney.com.au/sale/nsw/north-shore-upper/elvina-bay/residential/house/8055365>



39 Sturdee Lane, Elvina Bay

Measurements are approximate. Not to scale. Illustrative purposes only.  
Open2view does not take any responsibility for any information supplied.

