



**3/ 43 Iluka Road Palm Beach NSW**

3 2 2

For Sale

Offering expansive views from Lion Island to the Basin, with tiled outdoor entertaining areas providing magical sunsets from a sparkling Pittwater and Ku-ring-gai National Park.

Positioned in one of Palm Beach's premier streets, these enormous apartments of 540 sqm and 406 sqm, a stones thrown from Snapperman Beach offer the very best in luxurious coastal living.

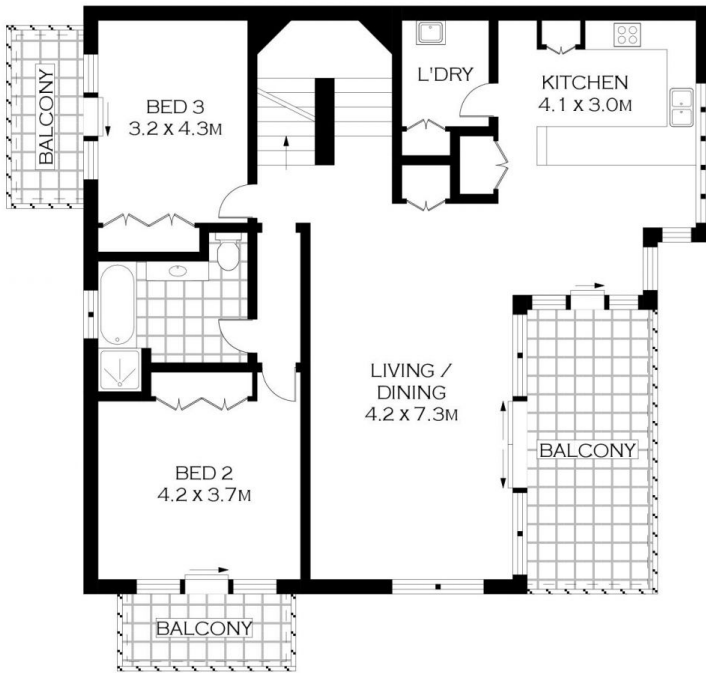
Opportunities to buy in first class locations don't come often so move quickly.

[For full version visit the website](https://www.ciresydney.com.au)

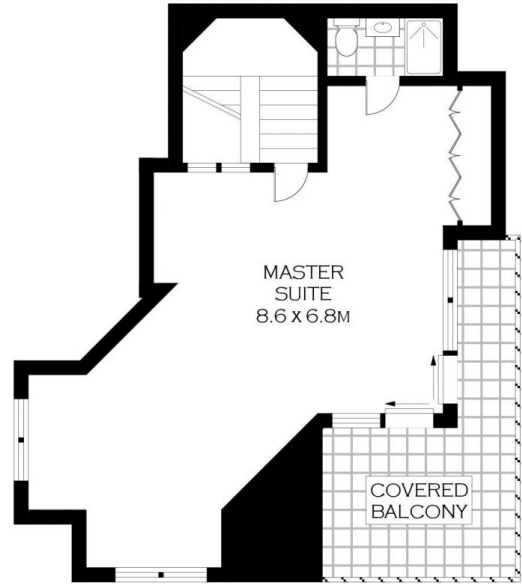
**Type** : Apartment  
**Land Size** : 1359 sqm  
**View** : <https://www.ciresydney.com.au/sale/nsw/northern-beaches/palm-beach/residential/apartment/8055425>



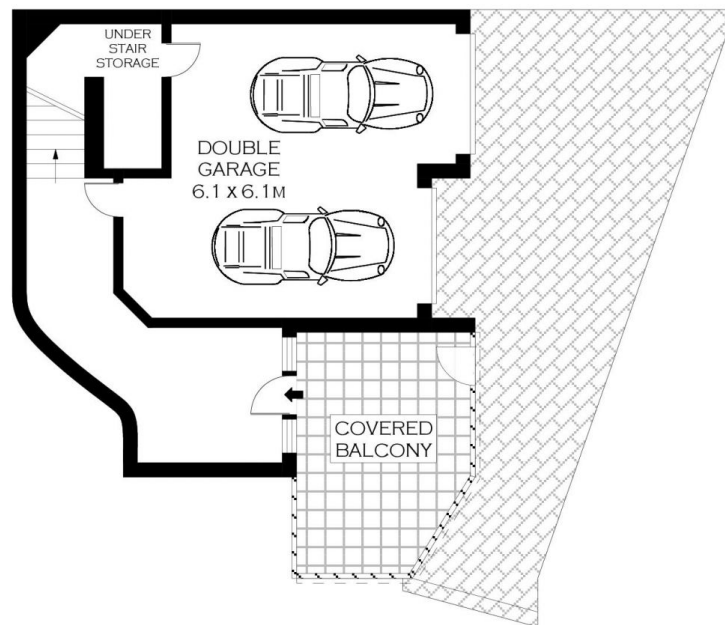
**Shane Clinton**  
02 9328 1422



FIRST FLOOR



SECOND FLOOR



GROUND FLOOR



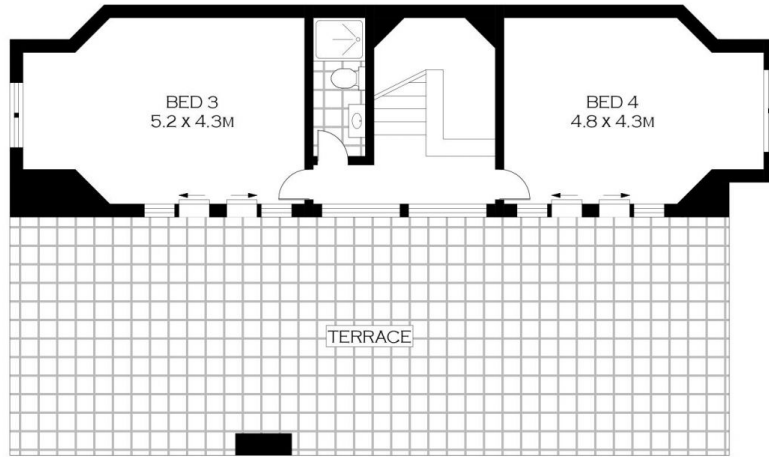
PLANS SHOWN ONLY INDICATIVE OF LAYOUT. DIMENSIONS ARE APPROXIMATE.  
 Floor plans by www.remaustralia.com  
 Ref. No: 15391

INT : 248.83M<sup>2</sup>

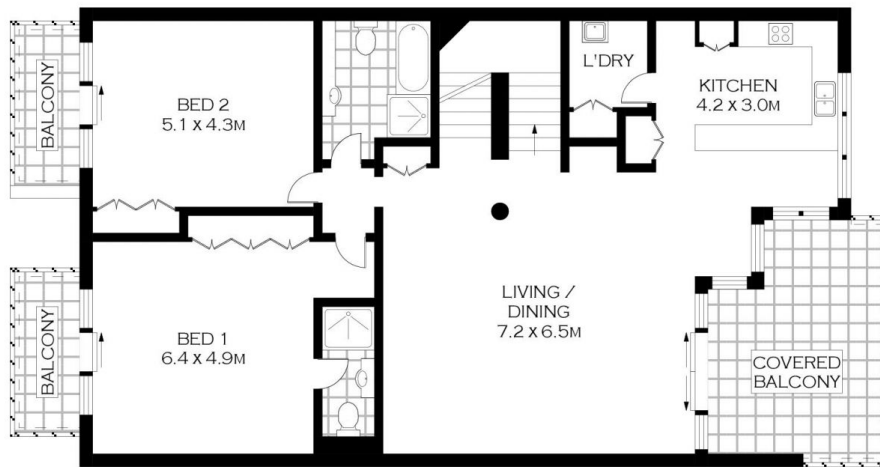


3/43 ILUKA ROAD

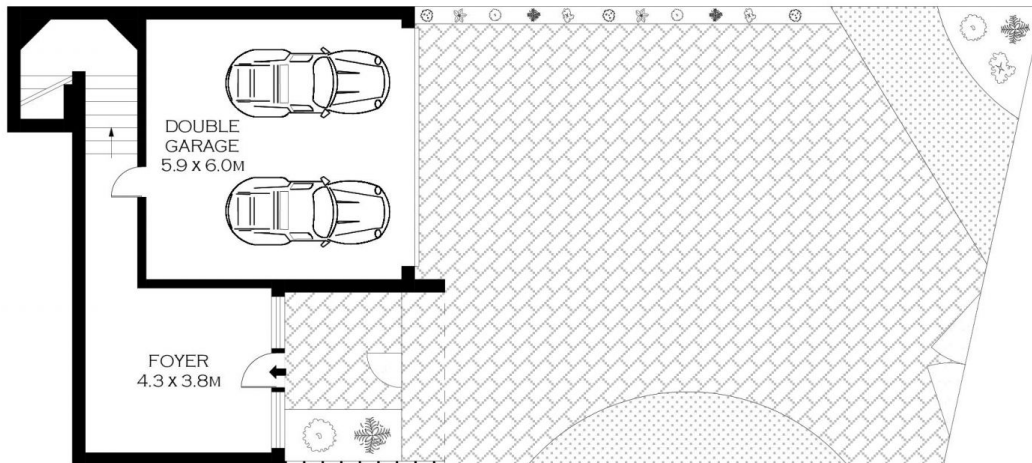
PALM BEACH



SECOND FLOOR



FIRST FLOOR



GROUND FLOOR



PLANS SHOWN ONLY INDICATIVE OF LAYOUT. DIMENSIONS ARE APPROXIMATE.  
Floor plans by [www.remaustralia.com](http://www.remaustralia.com)  
Ref. No: 15390

INT : 287.55M<sup>2</sup>



1 / 43 ILUKA ROAD

PALM BEACH