



38 Lauffs Lane Wyong Creek NSW

3 4 8

- 'Escala' sits high and north facing on 3.51 HA, embracing a stunning spectacular over the Yarramalong Valley.
- The unique property gained the prestigious winner of the 2007 National Building Design Award.
- The home is a statement in eco-friendly and solar passive architecture whilst remaining high-end and luxury.
- Already acclaimed as a stunning B & B, it incorporates a superb single level home with 2 self-contained studios.
- Expansive interiors feature a sweeping living, dining and music room framed in galleries of glass.

Type : House
Land Size : 3.51 ha
View : <https://www.ciresydney.com.au/sale/nsw/central-coast-region/wyong-creek/residential/house/8055427>

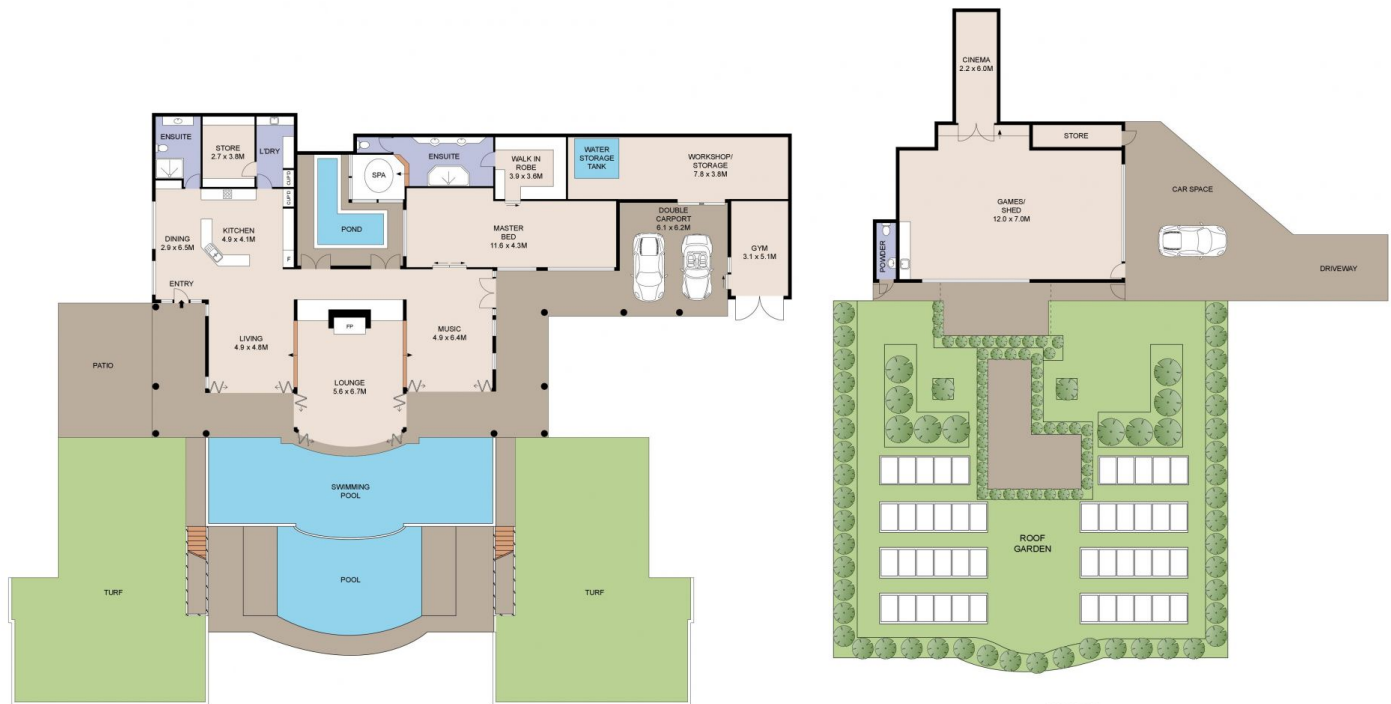


James Hall
02 9328 1422



Darren Curtis
02 9328 1422

[For full version visit the website](https://www.ciresydney.com.au)



GROUND FLOOR

TOP FLOOR



LOWER GROUND FLOOR



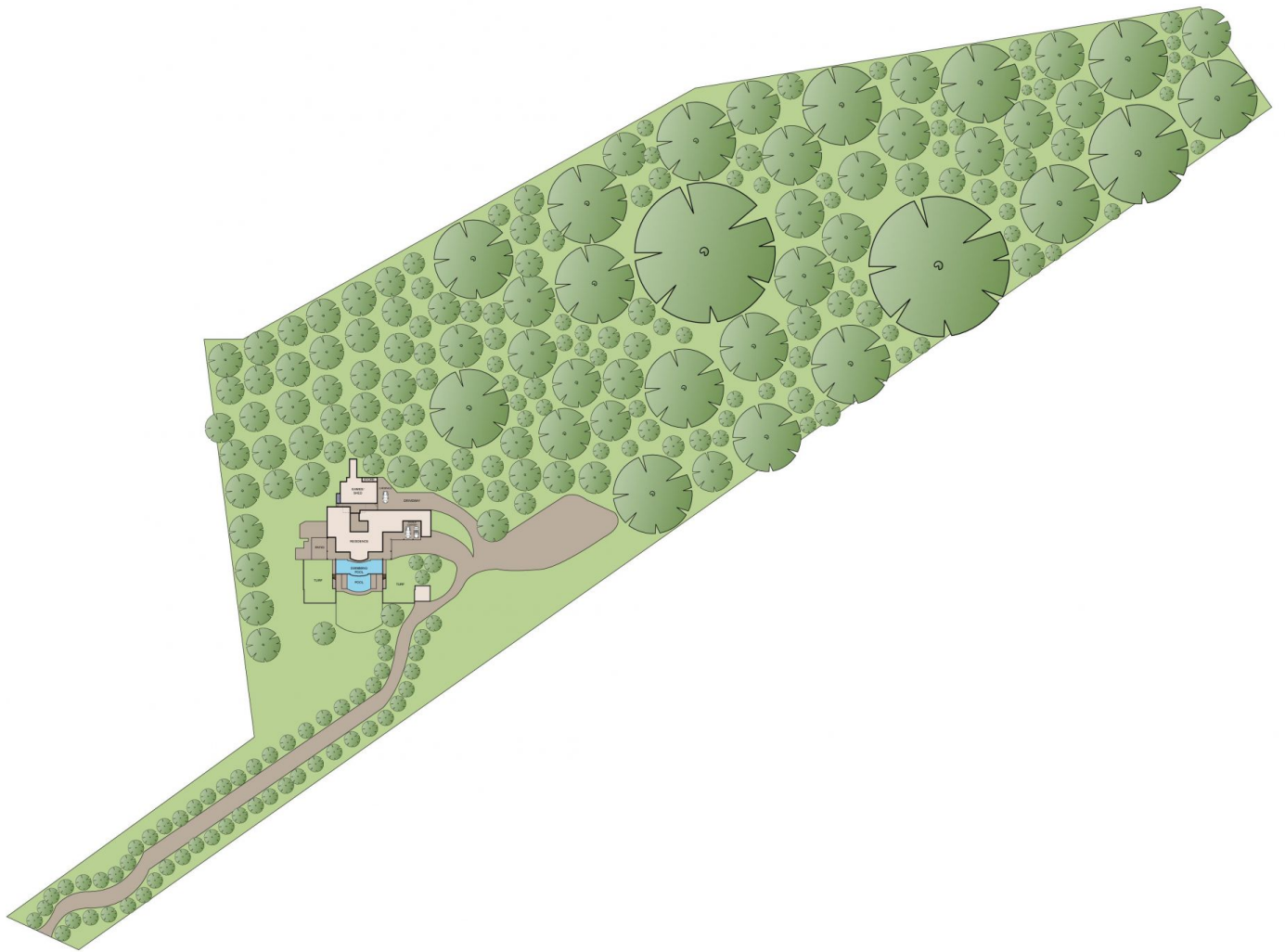
TOTAL INTERNAL: 659 m²



Plans shown are for presentation purposes only and are not part of any legal document or title. They are subject to errors, omissions, inaccuracies and should not be used as a sole and accurate reference. Interested parties should make their own inquiries using independent sources.

38 LAUFFS LANE

WYONG CREEK



© 2014

Plans shown are for presentation purposes only and are not part of any legal document or title. They are subject to errors, omissions, inaccuracies and should not be used as a sole and accurate reference. Interested parties should make their own inquiries using independent sources.

38 LAUFFS LANE

WYONG CREEK