



18 Robertson Street Greenwich NSW

5 3 2

Rarely does the opportunity arise to secure property of this calibre, privately placed as one of only 19 exclusive residences to share the waterfront in Greenwich, on a stunning 1,341 sqm (approx.) Nestled in an intimate cul-de-sac, the property spans to the water's edge incorporating terraced gardens and private access to a beach.

Hidden beyond a walled and gated exterior and north-east facing, the solid full brick home sits on a sandstone base, embracing magnificent panoramas over Woodford Bay, the Lane Cove River, Woolwich and the city skyline. Elegant and light filled, it can be instantly enjoyed, renovated or extended or with no conservation, removed and replaced (STCA).

[For full version visit the website](https://www.ciresydney.com.au)

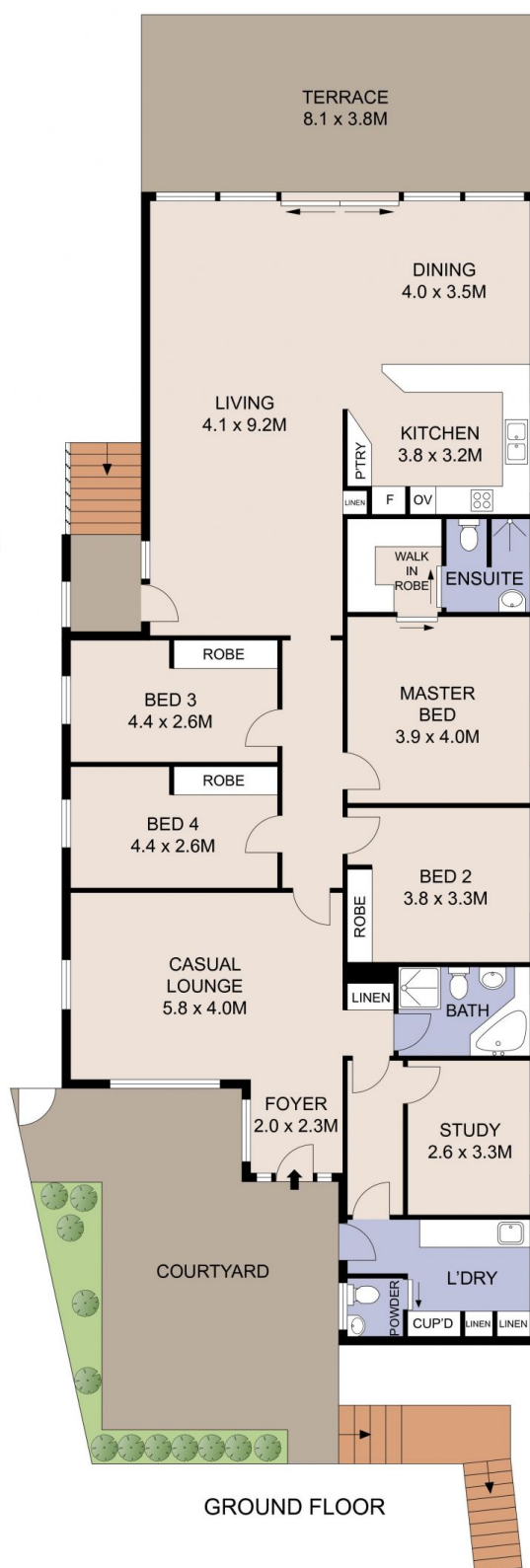
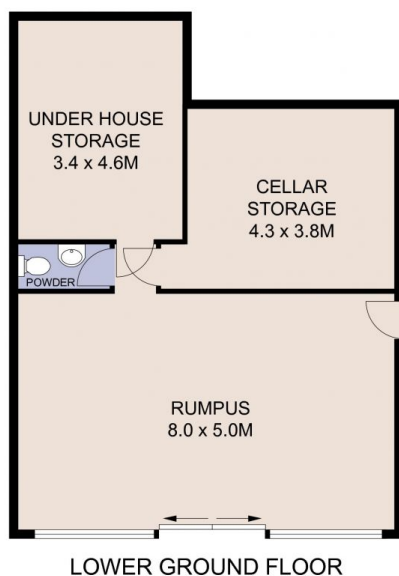
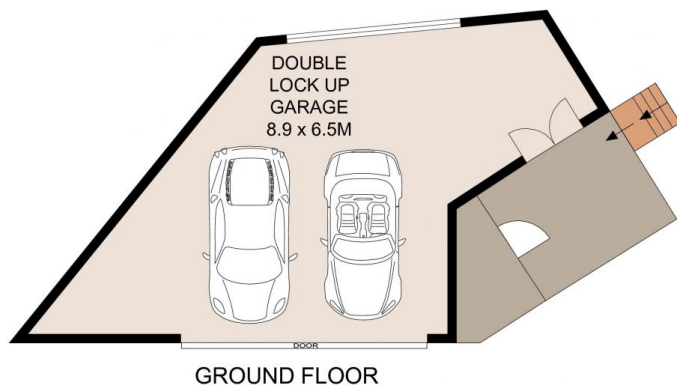
Type : House
Land Size : 1341 sqm
View : <https://www.ciresydney.com.au/sale/nsw/north-shore-lower/greenwich/residential/house/8055431>



Darren Curtis
02 9328 1422



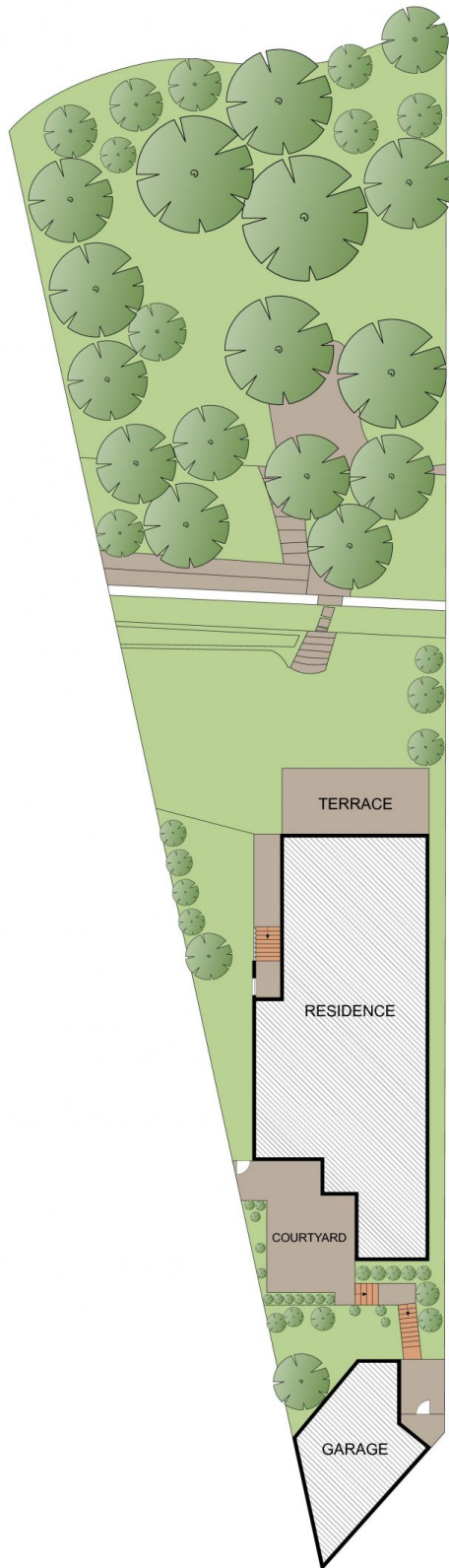
Amy Zhang
02 9328 1422



Plans shown are for presentation purposes only and are not part of any legal document or title. They are subject to errors, omissions, inaccuracies and should not be used as a sole and accurate reference. Interested parties should make their own inquiries using independent sources.

18 ROBERTSON STREET

GREENWICH



SITE PLAN
(NOT TO SCALE)



Plans shown are for presentation purposes only and are not part of any legal document or title. They are subject to errors, omissions, inaccuracies and should not be used as a sole and accurate reference. Interested parties should make their own inquiries using independent sources.

18 ROBERTSON STREET

GREENWICH