



**20 Burrawong Avenue Mosman NSW**

4 3 2

Style and class in an elite setting.

On approx. 530sqm in a prized Clifton Gardens cul-de-sac near Sydney Harbour, National Park, this glorious residence combines an open design on two levels with high level finishes, a resort alfresco environment and sweeping views to the Harbour from its upper level. Rarely does a home offer so much flexibility for the growing family complete with a choice of living areas, home office and generous garaging. Enviably situated on the edge of Sydney Harbour National Park, it delivers a superb choice to enter into one of Mosman's most desirable neighbourhoods.

? Stunning bespoke luxury residence resting on more than

[For full version visit the website](https://www.ciresydney.com.au)

**Type** : House  
**Price** : Expressions of Interest  
**Land Size** : 536 sqm  
**View** : <https://www.ciresydney.com.au/sale/nsw/north-shore-lower/mosman/residential/house/8082987>



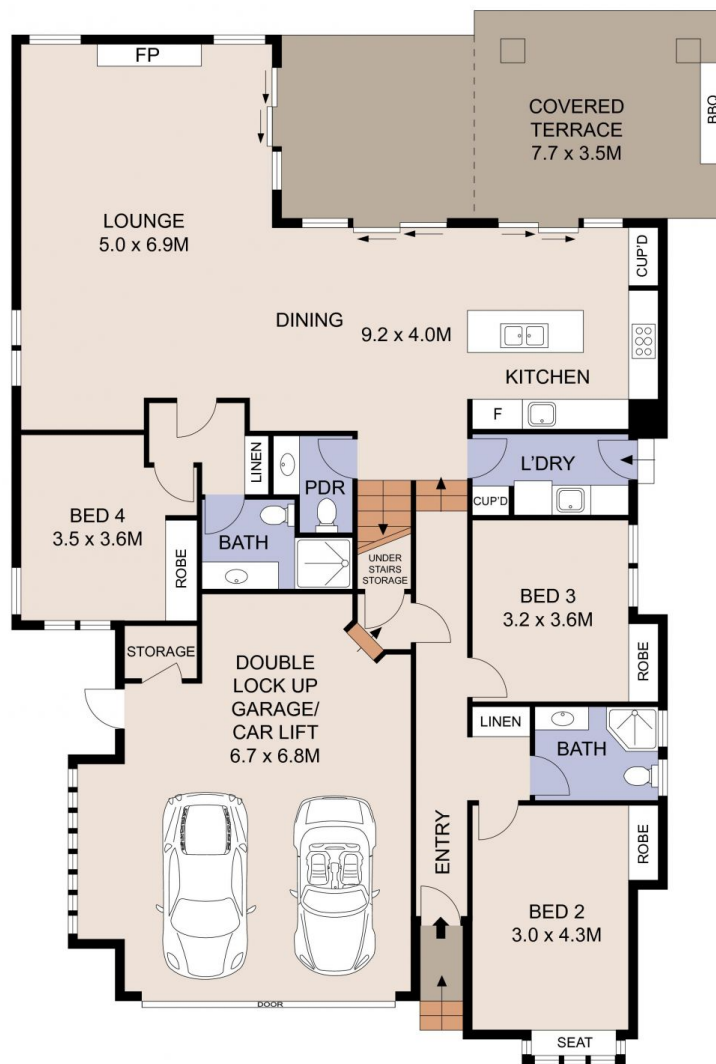
**Martin Ross**  
02 9328 1422



**Erik Stoneberg**  
02 9328 1422



FIRST FLOOR



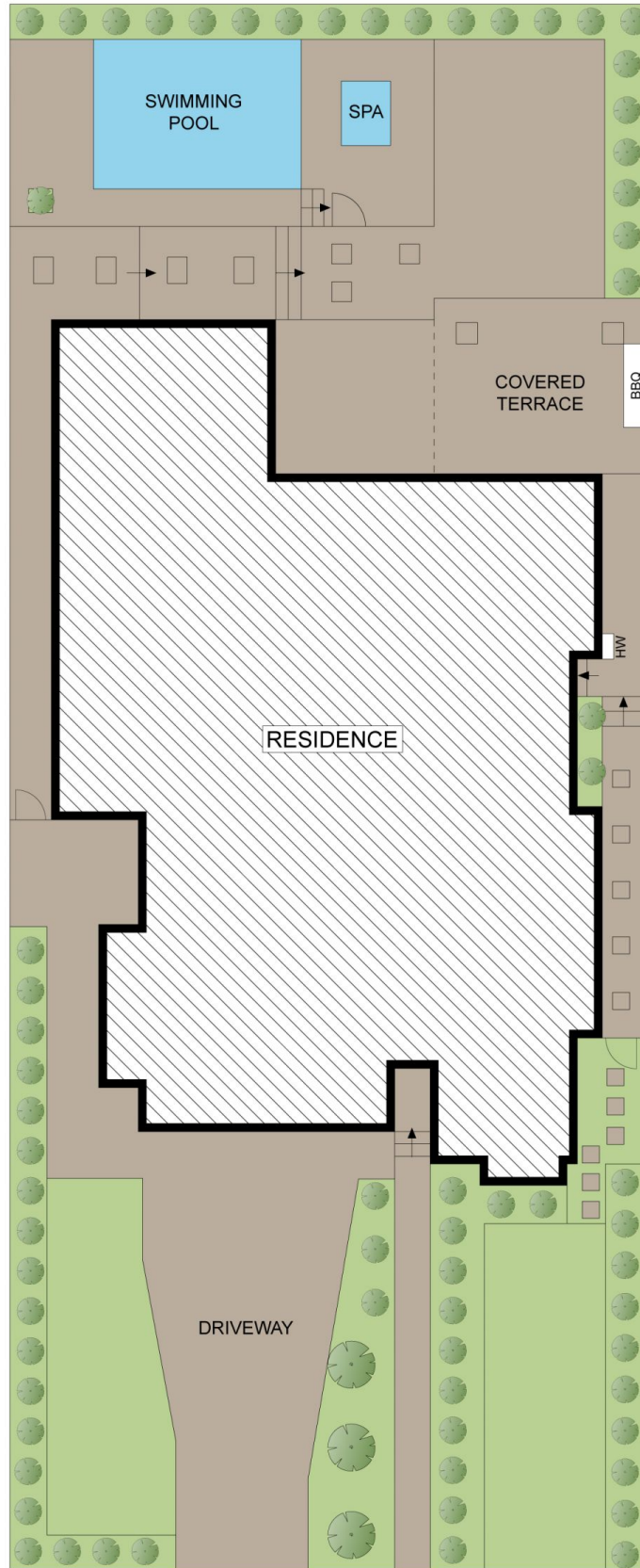
GROUND FLOOR



Plans shown are for presentation purposes only and are not part of any legal document or title. They are subject to errors, omissions, inaccuracies and should not be used as a sole and accurate reference. Interested parties should make their own inquiries using independent sources.

20 BURRAWONG AVENUE

MOSMAN



Plans shown are for presentation purposes only and are not part of any legal document or title. They are subject to errors, omissions, inaccuracies and should not be used as a sole and accurate reference. Interested parties should make their own inquiries using independent sources.

20 BURRAWONG AVENUE

MOSMAN