



**7a Bowen Mountain Road Grose Vale NSW**

10 4 6

A truly magnificent property that boasts sprawling, parklike grounds & breathtaking rural and city skyline views. Perfect for the equine enthusiast or anyone seeking multiple residences for extended family. Currently operating as a highly profitable B&B and wedding venue, this property also offers room for expansion & additional income opportunities. This secluded estate offers an idyllic escape from the city in a picturesque, rural setting, yet is only about an hr from Sydney and just 5 mins from the vibrant array of shops, galleries, cafes & restaurants in Kurrajong.

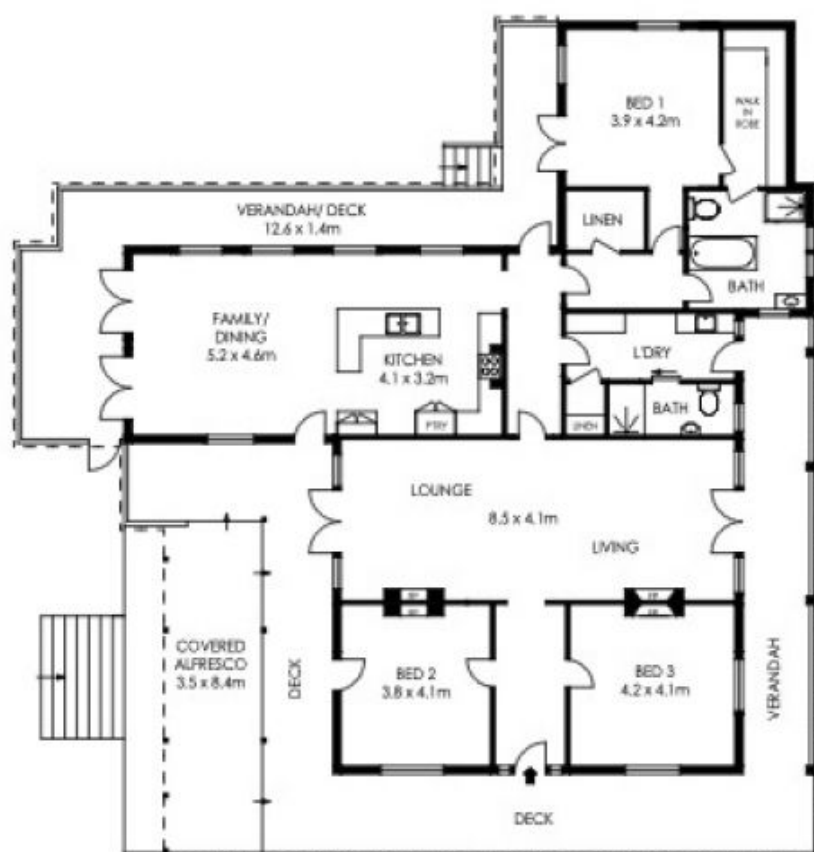
From the gated entrance to the manicured lawns and architect-designed gardens with water features & stonework, the quality of this property is evident. Horse lovers will be delighted by the Olympic-sized dressage

[For full version visit the website](https://www.ciresydney.com.au)

**Type** : Acreage/Semi-Rural  
**Price** : Expressions of Interest  
**Land Size** : 31.56 Acres  
**View** : <https://www.ciresydney.com.au/sale/nsw/hawkesbury/grose-vale/residential/acreage/semi-rural/8112950>



**Darren Curtis**  
02 9328 1422



WHITE HOUSE



ENTRY LEVEL



LOWER LEVEL



COTTAGE 1



COTTAGE 2

APPROX. INTERNAL AREA	=	419 m <sup>2</sup>
APPROX. EXTERNAL AREA	=	196 m <sup>2</sup>
TOTAL	=	600 m <sup>2</sup>
COTTAGE 1	=	99 m <sup>2</sup>
COTTAGE 2	=	31 m <sup>2</sup>
LAND SIZE	=	45399 m <sup>2</sup>

PLANS SHOWN ONLY INDICATIVE OF LAYOUT. DIMENSIONS ARE APPROXIMATE.



7 Bowen Mountain Road, Grose Vale



APPROX. INTERNAL AREA = 419 m<sup>2</sup>  
 APPROX. EXTERNAL AREA = 196 m<sup>2</sup>  
 TOTAL = 600 m<sup>2</sup>  
 COTTAGE 1 = 99 m<sup>2</sup>  
 COTTAGE 2 = 31 m<sup>2</sup>  
 LAND SIZE = 45399 m<sup>2</sup>

**SITE PLAN**  
 (NOT TO SCALE)

PLANS SHOWN ONLY INDICATIVE OF LAYOUT. DIMENSIONS ARE APPROXIMATE.



**7 Bowen Mountain Road, Grose Vale**