



**2352 George Bass Drive Broulee NSW**

8 6 2

'The Bower', a highly regarded eco-resort is nestled in the serene beauty of the Eurobodalla Nature Coast and offers a rare opportunity to embrace an unparalleled lifestyle on the stunning south coast of New South Wales. This unique holding, held under one owner for over 30 years, is located just one kilometre from renowned beaches. The property provides an exceptional setting for those seeking a luxurious retreat on approx. 106 acres with the added benefit of a supplementary income, or additional accommodation for friends and extended family. Whether you plan to build your dream luxury home (STCA) or invest in a thriving eco-tourism venture, The Bower serves as the perfect canvas for your aspirations.

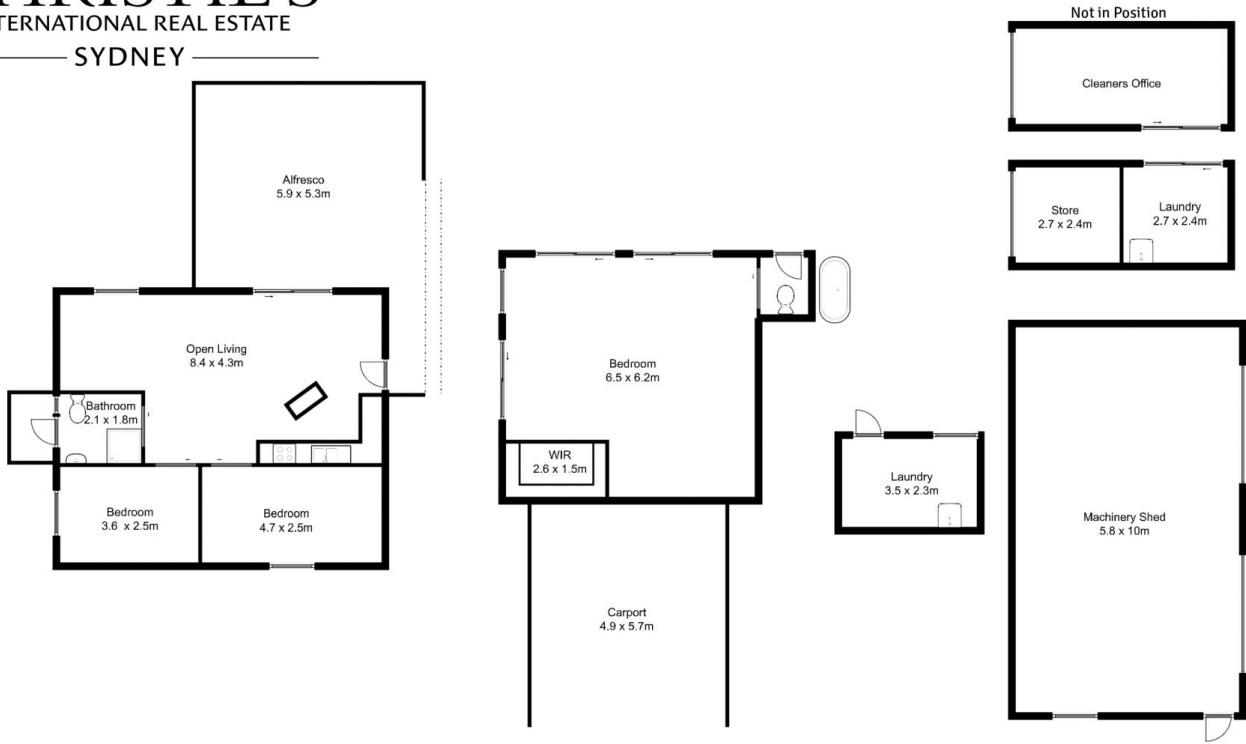
WHERE NATURE MEETS LUXURY

[For full version visit the website](https://www.ciresydney.com.au)

**Type** : Acreage/Semi-Rural  
**Price** : Expressions of Interest  
**Land Size** : 106.6 Acres  
**View** : <https://www.ciresydney.com.au/sale/nsw/eurobodalla-coast/broulee/residential/acreage-semirural/8120780>



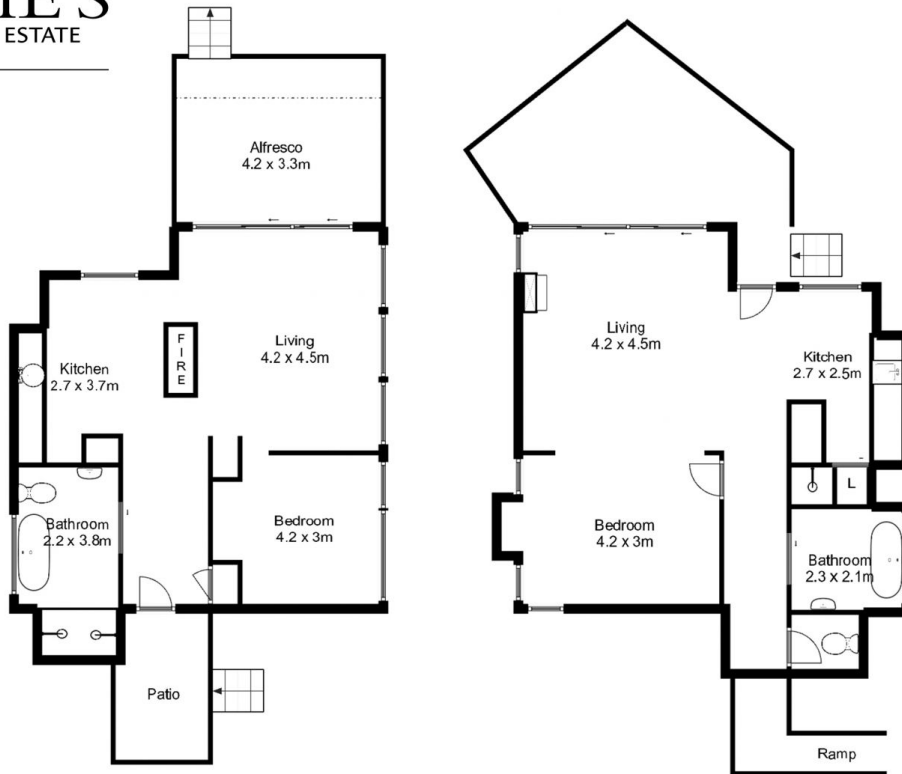
**Darren Curtis**  
02 9328 1422



All measurements are approximate and are intended as a guide only



Existing Cabin "Bower" layouts



All measurements are approximate and are intended as a guide only

