



**32 Nelson Street Gordon NSW**

5 5 6

For more information visit: <https://32nelsonstreet.cve.io/>

Absolute perfection, charismatic Federation estate

Overseeing a stunning 3,693sqm in dress-circle Gordon, 'Mandalay' is a home of the highest calibre and excellence.

Restored, rebuilt and extended, no corner has been cut or detail spared in its incredible transformation.

Its rests amongst Peter Fudge designer gardens wrapped in verandahs with a heated pool, spa and tennis court.

Period features have been retained including high ornate ceilings, kauri flooring and original fireplaces.

[For full version visit the website](https://www.ciresydney.com.au)

**Type** : House

**View** : <https://www.ciresydney.com.au/sale/nsw/north-shore-upper/gordon/residential/house/8153687>



**Darren Curtis**  
02 9328 1422

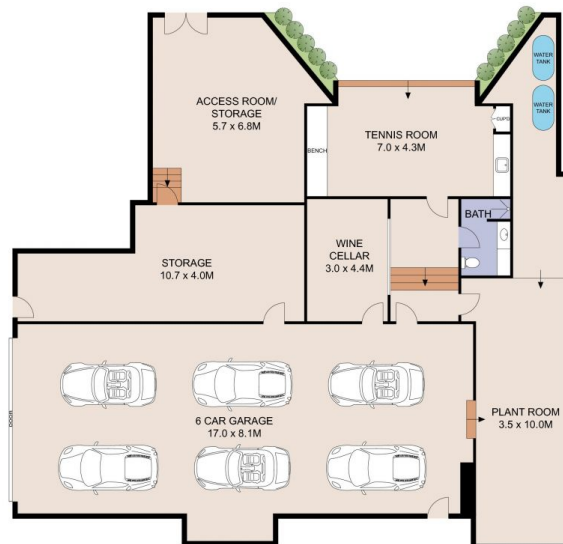


**Philip Waller**  
02 9328 1422



FIRST FLOOR

GROUND FLOOR



LOWER GROUND FLOOR

TOTAL INTERNAL: 1290 m<sup>2</sup>  
 TOTAL EXTERNAL: 3190 m<sup>2</sup>  
 TOTAL LAND SIZE: 3693m<sup>2</sup>

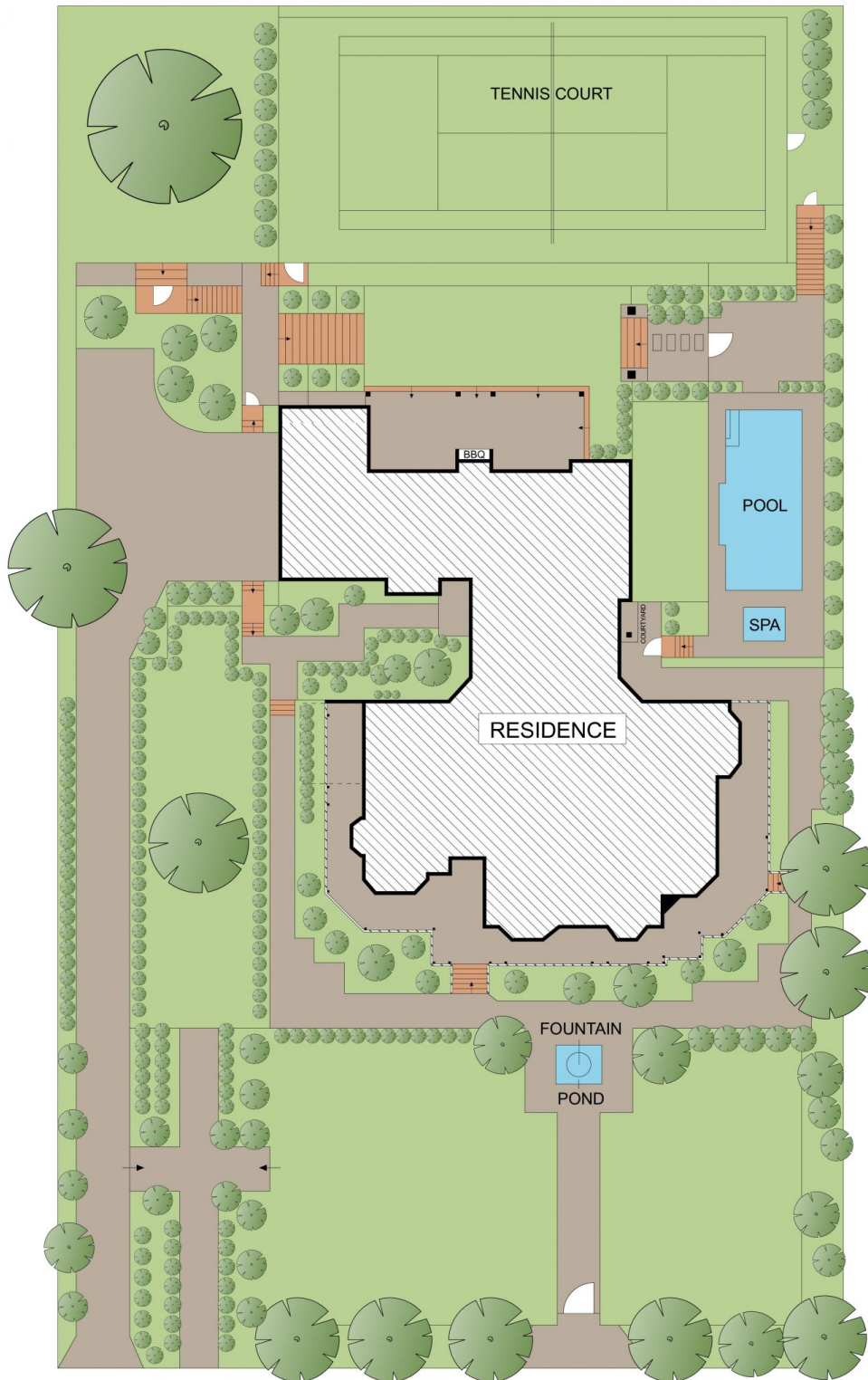


Plans shown are for presentation purposes only and are not part of any legal document or title. They are subject to errors, omissions, inaccuracies and should not be used as a sole and accurate reference. Interested parties should make their own inquiries using independent sources.

32 NELSON STREET

GORDON





TOTAL INTERNAL: 1290 m<sup>2</sup>  
 TOTAL EXTERNAL: 3190 m<sup>2</sup>  
 TOTAL LAND SIZE: 3693 m<sup>2</sup>



0 1 2 3 4 5 METRES

Plans shown are for presentation purposes only and are not part of any legal document or title. They are subject to errors, omissions, inaccuracies and should not be used as a sole and accurate reference. Interested parties should make their own inquiries using independent sources.

32 NELSON STREET

GORDON