



26/93 Elizabeth Bay Road Elizabeth Bay NSW

2 🛏 2 🚿 2 🚗

241sqm of excellence with sweeping bay views, an exceptional harbour front sanctuary.

- 4th floor luxury apartment in Mirvac's landmark Kincoppal, has an irreplaceable absolute waterfront setting.

- Enjoy a harmonious and genuine connection with the water and mesmerising vistas over Rushcutters Bay.

- Offering an extraordinary 241sqm on title, (inc. parking), this single level apartment delivers a secure and convenient lifestyle in a peaceful setting.

- Expansive and open plan living and dining with new, contemporary finishes (schedule can be supplied), spills

[For full version visit the website](https://www.ciresydney.com.au)

Type : Apartment

Price : Expressions of Interest

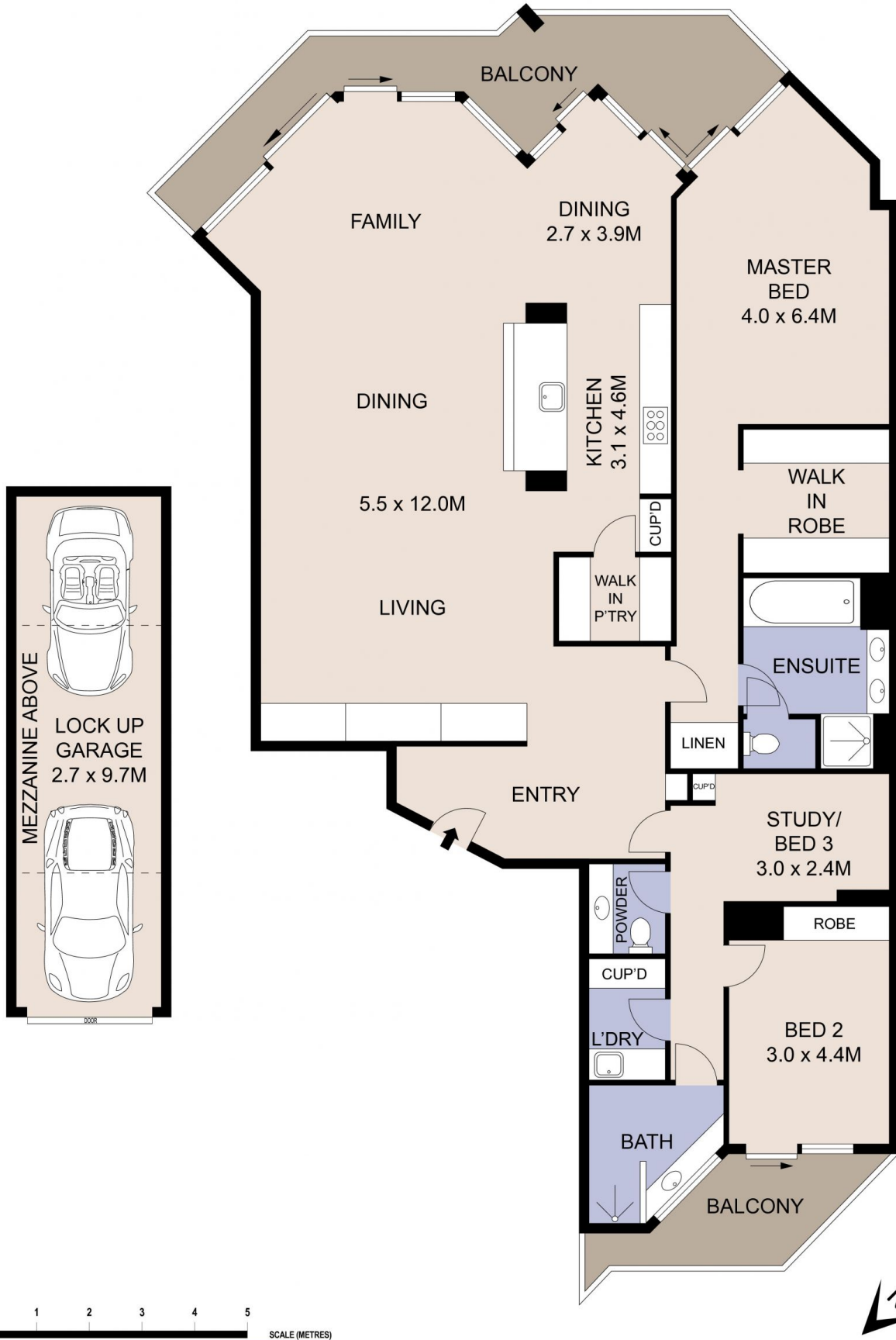
View : <https://www.ciresydney.com.au/sale/nsw/eastern-suburbs/elizabeth-bay/residential/apartment/8161616>



Darren Curtis
02 9328 1422



Martin Ross
02 9328 1422



Plans shown are for presentation purposes only and are not part of any legal document or title. They are subject to errors, omissions, inaccuracies and should not be used as a sole and accurate reference. Interested parties should make their own inquiries using independent sources.

26/93 ELIZABETH BAY ROAD

ELIZABETH BAY