



**37 George Street Greenwich NSW**

5 🛏 3 🚿 2 🚗

Harnessing uninterrupted harbour, city and bridge views from its coveted peninsula setting, this remarkable, reinvented residence presents a prestigious family lifestyle with a breathtaking finish and design. Resting atop an exceptional 929sqm, it showcases a seamless fusion of old and new, completed in 2022.

The elegant C1915 Federation was transformed under the guidance of acclaimed architect Aileen Sage Architects and constructed to an impeccable standard by Synergy One Building. No corners have been cut or details overlooked to create a home that not only meets the needs of a growing family flawlessly but stands the test of time.

? Exquisite C1915 home, architecturally transformed in

[For full version visit the website](https://www.ciresydney.com.au)

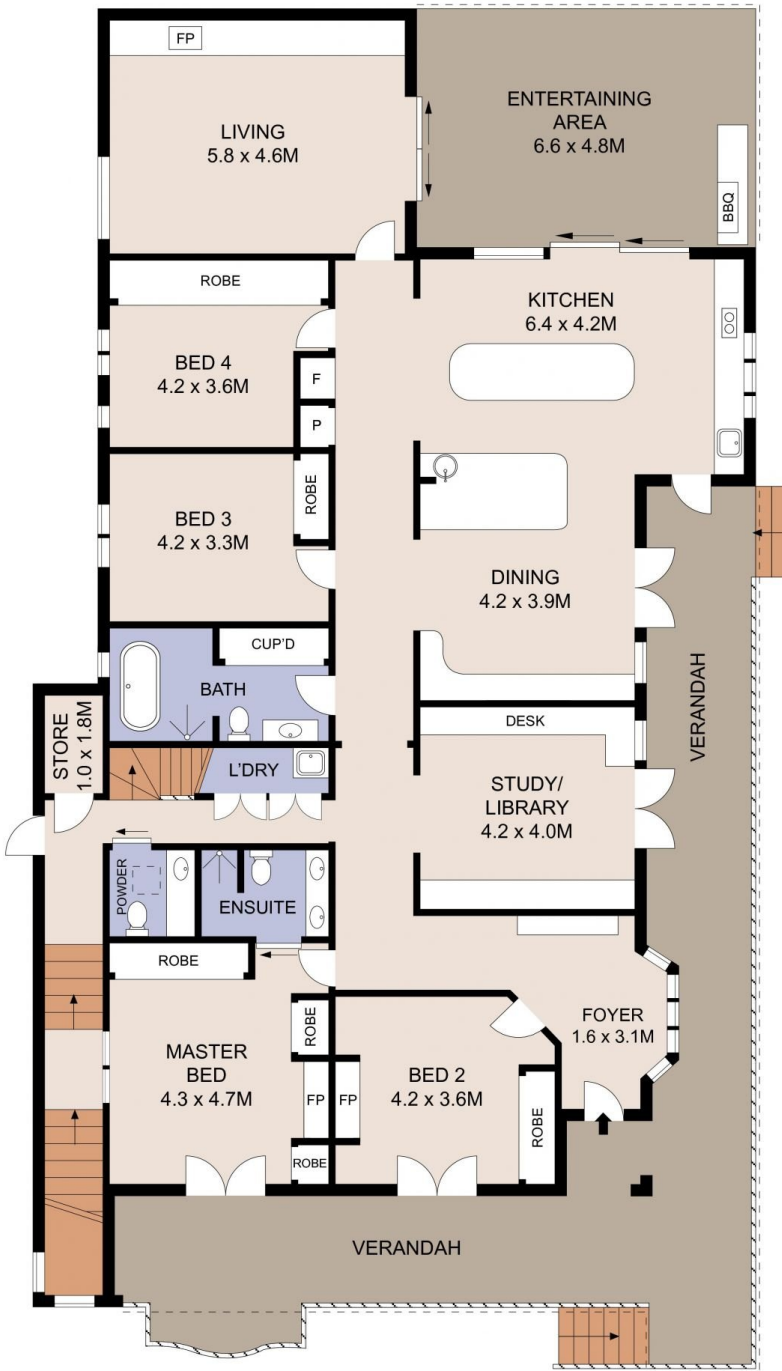
**Type** : House  
**Price** : Expressions of Interest  
**View** : <https://www.ciresydney.com.au/sale/nsw/north-s-hore-lower/greenwich/residential/house/8164423>



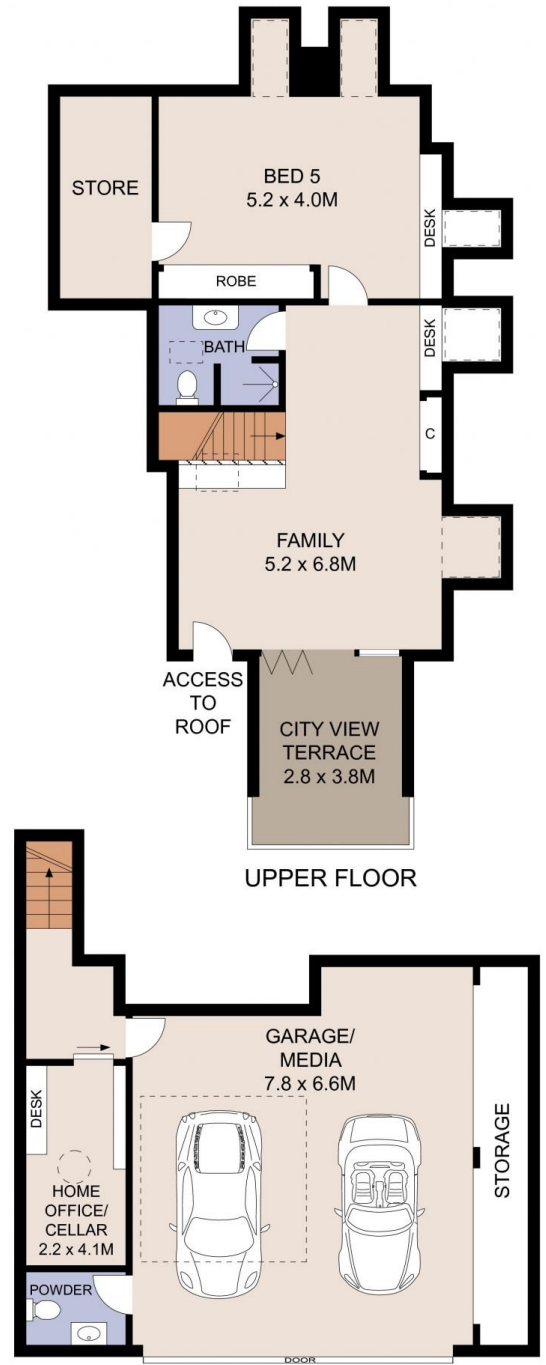
**Erik Stoneberg**  
02 9328 1422



**Martin Ross**  
02 9328 1422



GROUND FLOOR



LOWER FLOOR



Plans shown are for presentation purposes only and are not part of any legal document or title. They are subject to errors, omissions, inaccuracies and should not be used as a sole and accurate reference. Interested parties should make their own inquiries using independent sources.

37 GEORGE STREET

GREENWICH



SITE PLAN  
(NOT TO SCALE)



Plans shown are for presentation purposes only and are not part of any legal document or title. They are subject to errors, omissions, inaccuracies and should not be used as a sole and accurate reference. Interested parties should make their own inquiries using independent sources.



37 GEORGE STREET

GREENWICH